



Melting and holding furnace

- ➔ Future-orientated design ensures a safe investment
- ➔ Energy saving through the use of regenerative burner systems
- ➔ Flexible (quick alloy change)
- ➔ Clean (minimised burn-off losses)

EcoMelter[®] Type MSO

Melting and holding furnace

The EcoMelter[®] Type MSO is a melting and holding furnace with or without a dry hearth. It is used in foundries with a low metal requirement and frequent alloy changes. On average, the furnace is capable of processing 20–25 tons of liquid metal every 24 hours with bath sizes of between 2 t and 5 t. The charging of metal is performed almost independently of the removal of liquid aluminium.

Less dross formation

In its standard version, the oven is fixed with a pneumatically actuated casting tap. The EcoMelter[®] Type MSO furnace geometry, with its small bath surface, results in reduced dross formation and the large bath door facilitates skimming works.

Customer-specific charging

We strive to meet your individual charging requirements – and ensure the design requirements are met. The charging of piece goods, e.g. T-bars may be performed through the dry hearth door. Small-size in-house scrap is generally handled with a semi-automatic lifting and tilting device for containers; charging is then completed through the charging shaft.

Advantages:

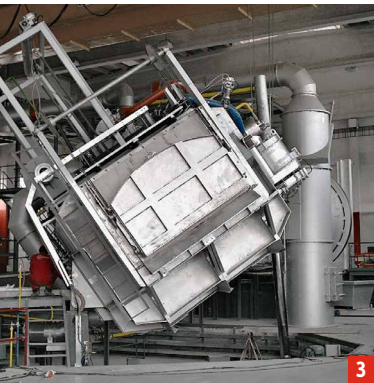
- > Safety of investment through heat recovery
- > Lower overall energy consumption through regenerator burners
- > Waste gas temperatures < 300 °C
- > Minimised burn-off losses
- > More frequent alloy change through matched furnace geometry
- > Easy charging using a wheel loader or a forklift
- > Easy handling through a large bath door
- > Can be equipped with the Alu-Treat[®] bath treatment for aluminium

Programmable control

The system is controlled by a Siemens S7, in which the entire system and all necessary data are visualised.



2



3

- 1 EcoMelter[®] MSO
- 2 PulsReg[®] system on the EcoMelter[®]
- 3 EcoMelter[®] MSO tilted

An overview of our industrial furnace products:

- MultiMelter[®]
- EcoMelter[®] MSO / WSO / HSO
- Casting furnace GO
- Rotary drum furnace DKO
- Charging
- Alu-Treat[®]

More information at:
www.jasper-gmbh.de

